



Advanced Pelletization Plant

Waynesboro, Pennsylvania

Advanced Pelletization Plant

Situated 75 miles northwest of Washington, D.C., with convenient access to several major interstate highways, SGI's Advanced Pelletization Plant (APT) is located within an industrial manufacturing site in South-central Pennsylvania.

Since opening in 2017, SGI has made continual investment in site infrastructure and capabilities to support the manufacture of high-quality granulated materials for the agriculture industry.



Working With SGI

Granulation Equipment

- Pin Mixer
- Disc Pelletizer
- Fluid Bed Dryer

Dry Raw Material Handling

- 50 lb. Polybag
- Super Sack
- Bulk (truck)

Liquid Raw Material Handling

- Drums
- Totes
- Bulk (tank)

When you utilize SGI's APT to manufacture your granulated product, you receive high-touch customer service from employees experienced in developing a variety of custom formulations.

APT is equipped with a Process Dust Collector and non-hazardous waste disposal systems to ensure a safe manufacturing process and to eliminate the potential for contamination that could affect product integrity.

Choose from finishing options including screening; liquid post-treatment; a range of packaging options, and transportation of your product by truck or rail (via intermodal container or transloading).

SGI also can provide limited storage for an additional cost in its on-site, 10,000-square-foot warehousing space.

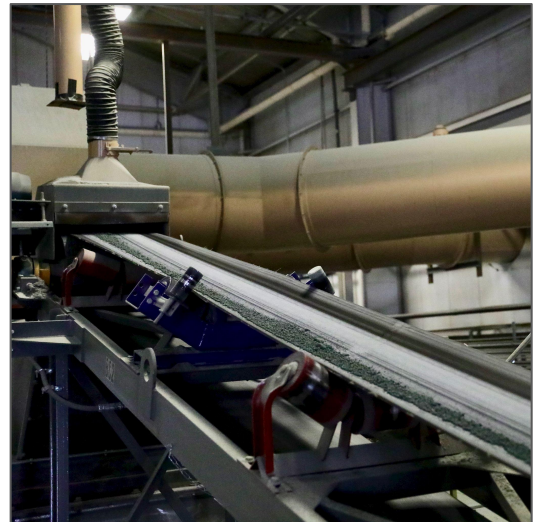
About SGI

SGI is a leading mining and mineral processing company specializing in the development of roofing products, building materials, and soil amendments for agriculture.

Our evolving product lines consistently exceed customer expectations and are made possible by the breakthroughs of scientists and technical specialists who merge industry best practices with innovative thought and sustainable leading-edge technologies.



Advanced Pelletization Plant Waynesboro, Pennsylvania



At SGI's APT, you are supported by a variety of Quality Assurance and Research & Development capabilities to fine-tune formulations, validate that stringent specifications are met, and ensure your custom product exceeds your expectations.

Development & Quality Services

- Lab-scale Granulation for Feasibility Studies
- Guaranteed Analysis
- Certificate of Authenticity
- Digital Process Control System
- Digital Microscopy
- Scanning Electron with Elemental Detection System
- C/N Analyzer
- X-ray Diffraction
- Discrete Analyzer
- Sieve Analysis
- Cam Sizer
- Laser Diffraction
- Shape Analysis
- Compressive Crush Strength
- Moisture Content Verification
- Attrition
- Bulk Density



Our Expertise:
Custom Granulated Formulations

Our Location:
Waynesboro, PA 17268



**Learn
More**

agriculture@specialtygranules.com
866-266-8504

